



Ramses MSC

Console Control System

ARC

installation / removal
guide



Authorized
dts
Digital Surround
System **DVD** Audio **DSD** **DXD**
Direct Stream Digital

 **MERGING**
MERGING TECHNOLOGIES

No part of this documentation may be reproduced in any form whatsoever or be stored in any data retrieval system without prior written permission of the copyright owners.

This documentation is supplied on an as-is basis. Information contained within this documentation is subject to change at any time without notice and must not be relied upon.

All company and product names are TM or Registered Trademarks ® of their respective owners.

Merging Technologies manufacturers importers or dealers shall not be liable for any incidental damages including personal injury or any other damages caused by improper use or operation of the hardware or software.

Merging Technologies makes no warranties express or implied regarding this software, its quality, performance, merchantability or fitness for a particular purpose. The software is supplied "as is" you, the purchaser, are assuming the entire risk of the results of using this Merging Technologies software.

In no circumstances will Merging Technologies, its owners, directors, officers, employees or agents be liable to you for any consequential, incidental or indirect loss or damages including loss of time, loss of business, loss of profits, loss of data or similar resulting from the use of or inability to use the Merging Technologies hardware and or software or for any defect in the hardware software or documentation.

© Copyright Merging Technologies Inc. 2007. All rights reserved

Ramses MSC Console

ARC Installation/Removal Guide : Contents

| | |
|------------------------------------|----|
| Introduction | 5 |
| Scope | 5 |
| Important - Before You Begin | 5 |
| ARC Removal | 6 |
| Remove the Rear ARC Support Covers | 6 |
| Disconnect Cables | 7 |
| Unscrew ARC Supports | 8 |
| Removing The ARC | 9 |
| Fitting The Front Covers | 10 |
| Refitting an ARC | 10 |
| New ARC Installation | 11 |
| Fitting The ARC | 15 |
| Attaching the ARC | 16 |
| Connect Cables | 17 |
| Fit the Rear ARC Support Covers | 18 |

Ramses MSC Console ARC Installation/Removal Guide

For

Ramses MSC Console

MSC 8/16/24

PRELIMINARY

Document number: 02-05

Date: 15-October-2007

Introduction

Congratulations! You have just purchased the world's most ergonomically advanced console. Your **Ramses MSC Console** should provide you with many years of trouble free operation, however it is important to follow these instructions carefully to remove or replace the **ARC**.

Scope

This document contains instructions for the safe installation or removal of an **ARC** to your **Ramses MSC Console**.

If you experience any problems or need any assistance please contact your local distributor or you can contact Merging Technology technical support in Switzerland via telephone on: +41 21 946 04 44 or via email on:

support@merging.com

Important - Before You Begin

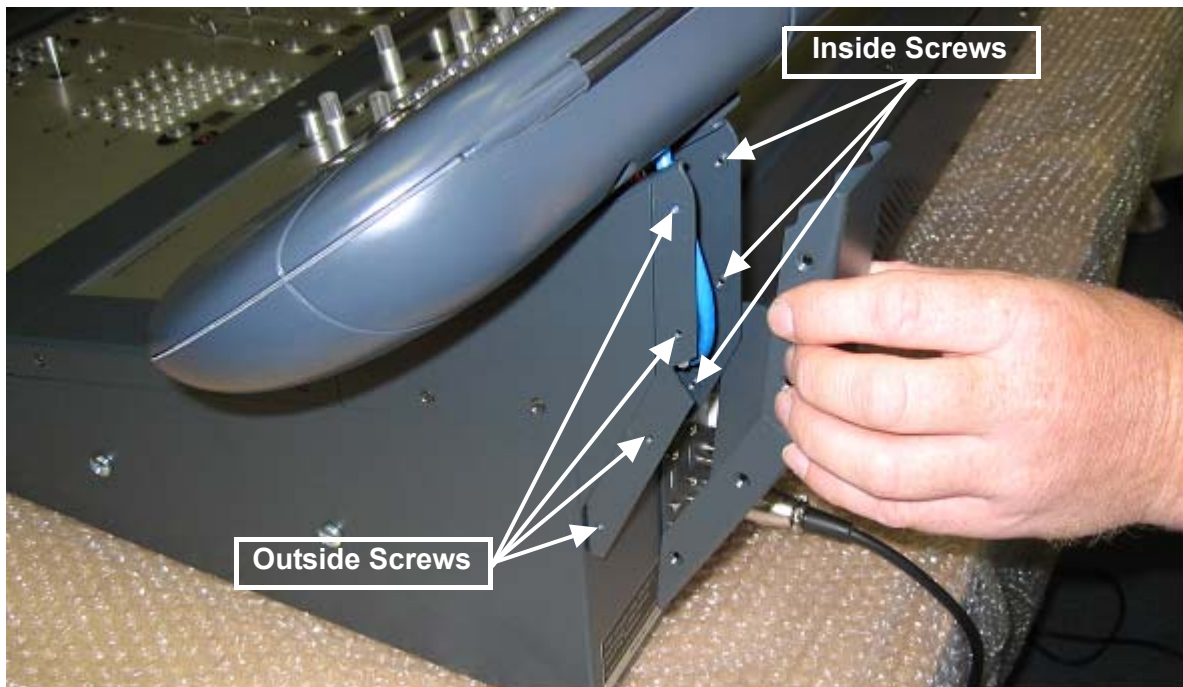
The **Ramses MSC Console** should be shut down before installing or removing the **ARC** assembly. Failure to do this could result in damage to the console or personal injury. Please ensure you follow these directions carefully to ensure that you do not experience any problems.

ARC Removal

Remove the Rear ARC Support Covers

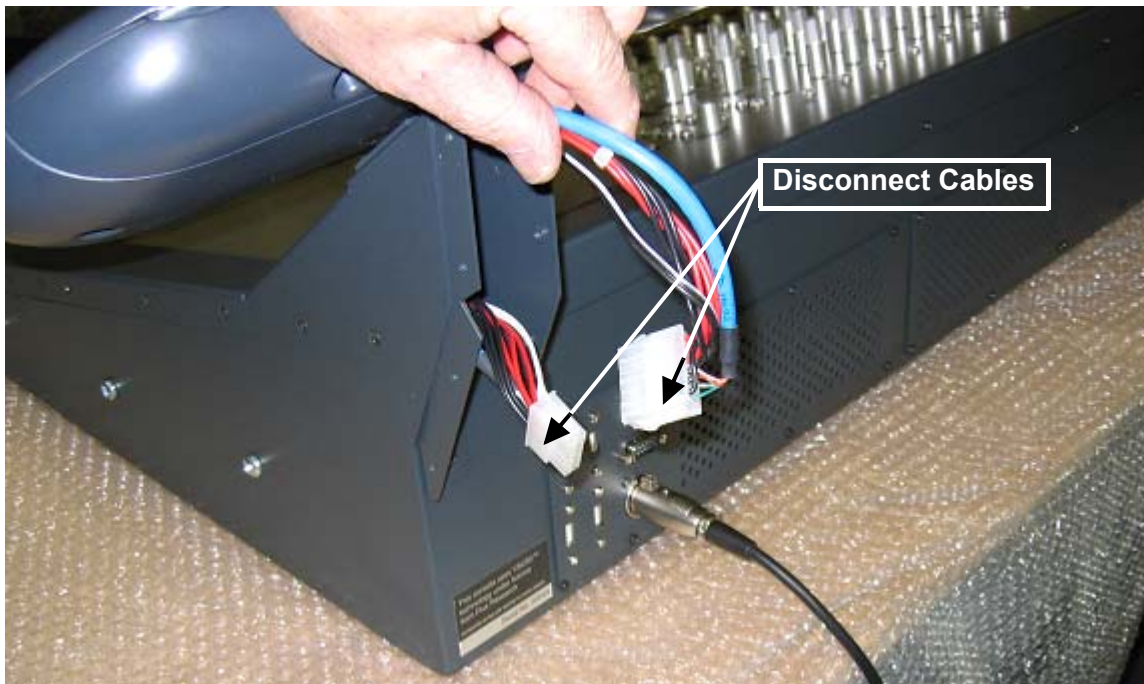
Note: Before commencing work ensure that the **Ramses MSC** is **NOT** powered on.

The first step is to remove the rear covers off the **ARC** supports. Remove the **4 outside** and **3 inside** screws from each **ARC** support cover. These screws are all **M3 x 6** CSK. The screw locations are identified in the image below. Pull the cover rearward to remove the cover as shown.



Disconnect Cables

Removing the covers will have exposed the **ARC** cables within each **ARC** support. Carefully pull out these cables from the support and disconnect them (on both sides of the console) as shown in the image below. Release the locking tab on the connectors before pulling them apart.



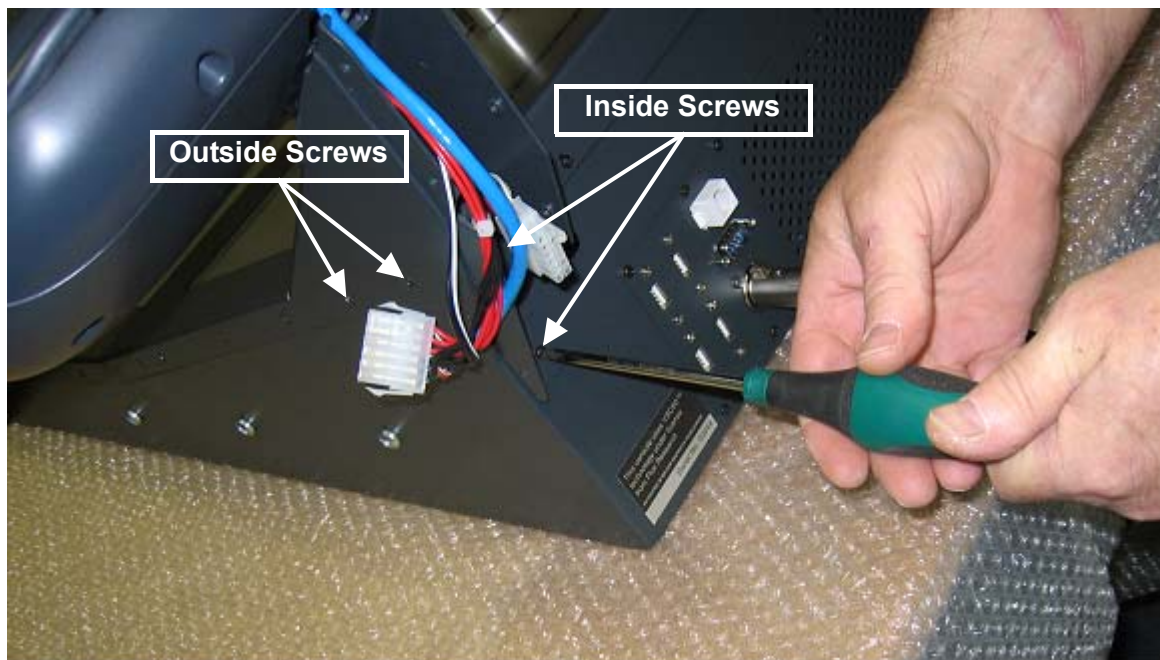
Unscrew ARC Supports

Note: IMPORTANT Ensure a second person is supporting the ARC during the following steps.

Locate the 2 screws inside the **ARC** supports and remove these screws. Now remove the 2 screws on the outside of each **ARC** support. The location of all these screws is shown in the image below.

The internal screws are **M3 X 6 PAN** and the external are **M3 X 6 CSK**.

Repeat this step for both sides of the console.



Removing The ARC

Note: IMPORTANT This step requires 2 people to ensure the **ARC** is not damaged during removal.

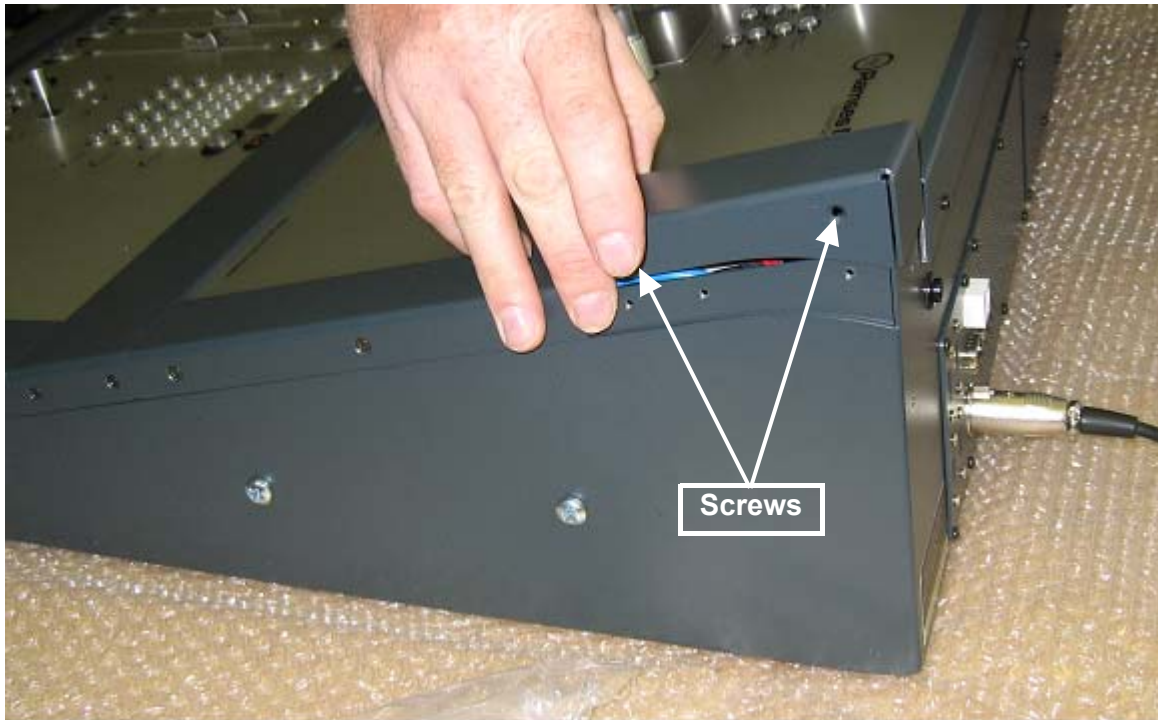
Grip each of the **ARC** supports (1 person each) and lift the **ARC** free from the console as shown in the image below. Take care not to scratch any of the painted surfaces and **DO NOT** lift the **ARC** by the plastic moldings as damage may occur.



Fitting The Front Covers

Push the protruding cables back into the console on each side. Now place the supplied covers over the holes where the **ARC** supports were sitting previously. Fasten the covers in place with 2 screws each in the locations shown in the image below.

The screws used for these covers are **M3 X 6 CSK**.



Refitting an ARC

To fit an **ARC** to your console, simply reverse the above steps.

Note: Before commencing work ensure that the **Ramses MSC** is **NOT** powered on.
Ensure the **ARC** is supported by a second person at all times.

When replacing the screws holding the **ARC** supports in place, fix the internal screws first followed by the external screws.



New ARC Installation

Note: Ensure the **Ramses MSC** is **NOT** powered on before installing the **ARC**.

The **ARC** support pillars are supplied packed separately. Please attach them using the following procedure before fitting the **ARC** to the **Ramses MSC**.

Place the **ARC** face down on a protective and secure surface. E.g. a blanket on a level and adequately sized horizontal work surface.



Locate the two support columns and the six M3 X 6mm screws, washers and star washers.

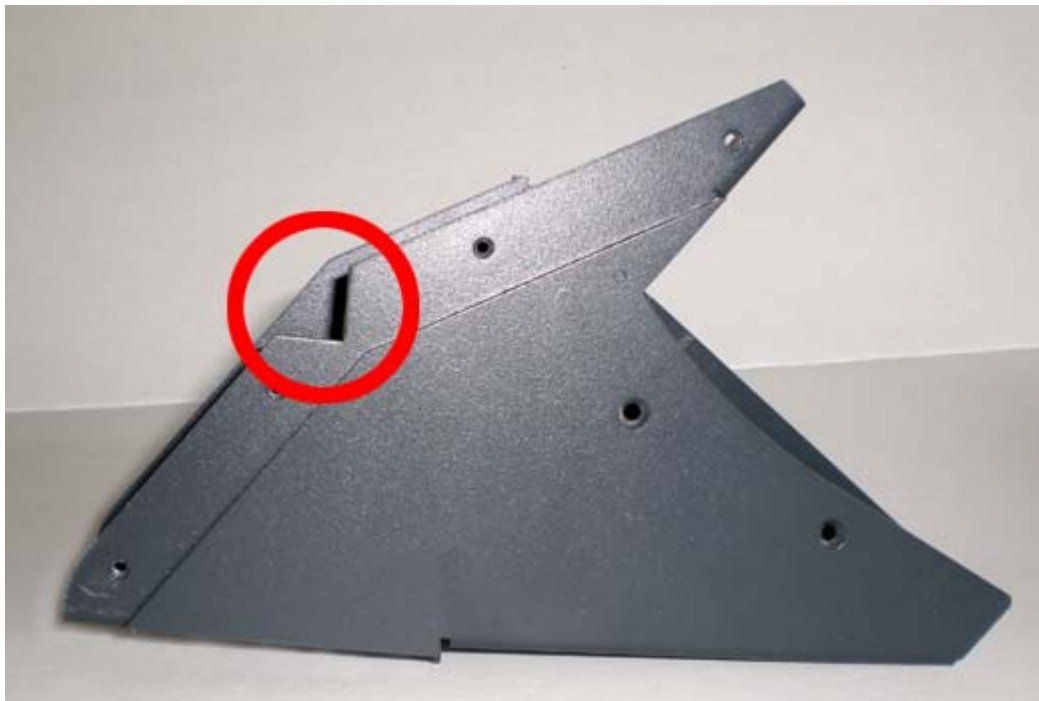




Note: The support brackets are handed. I.e. there is a left and a right version:

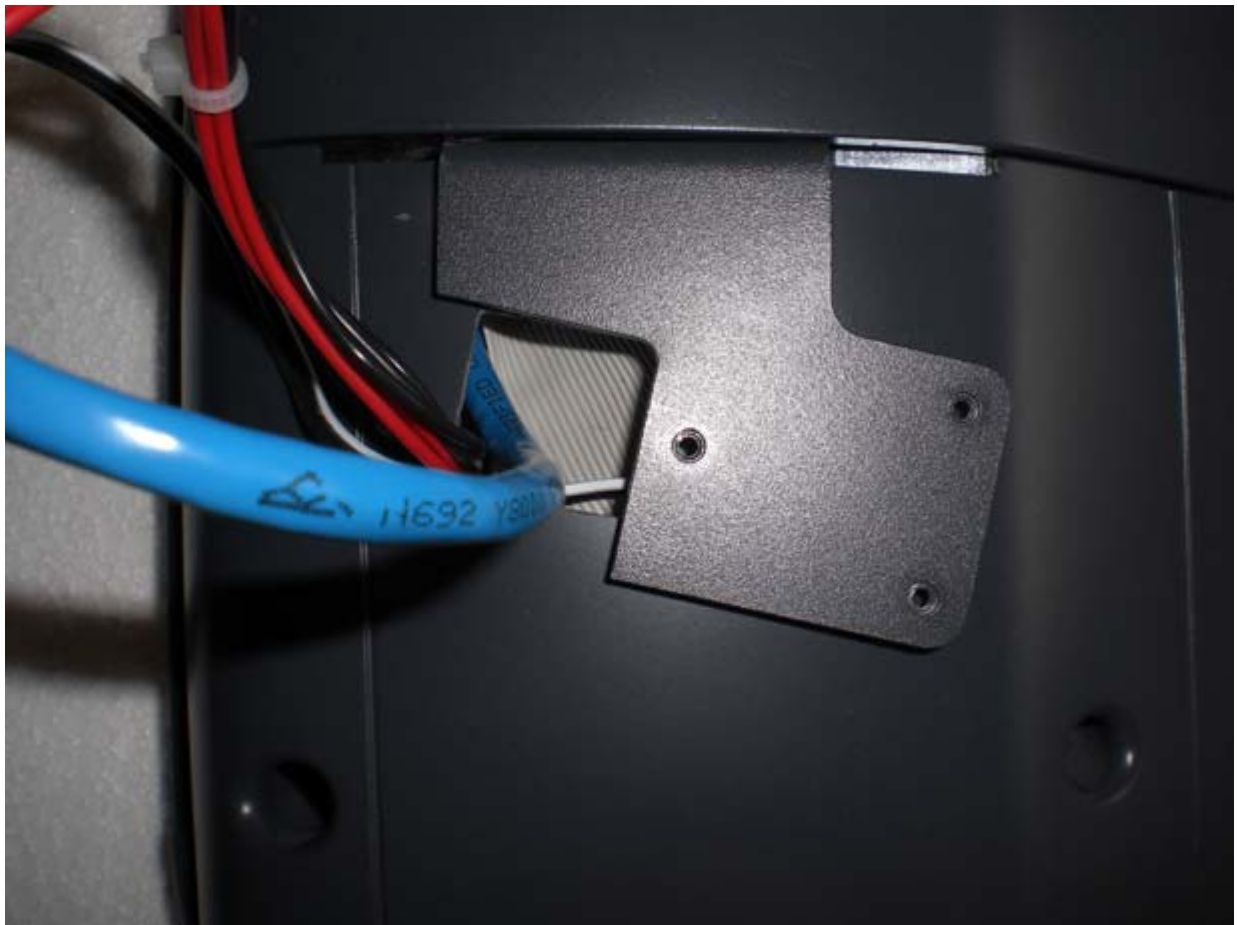


There are several identifying features but perhaps the most obvious is to check that the sides with the longest right-angle bracket with the “V” cutout go to the outside of the ARC.



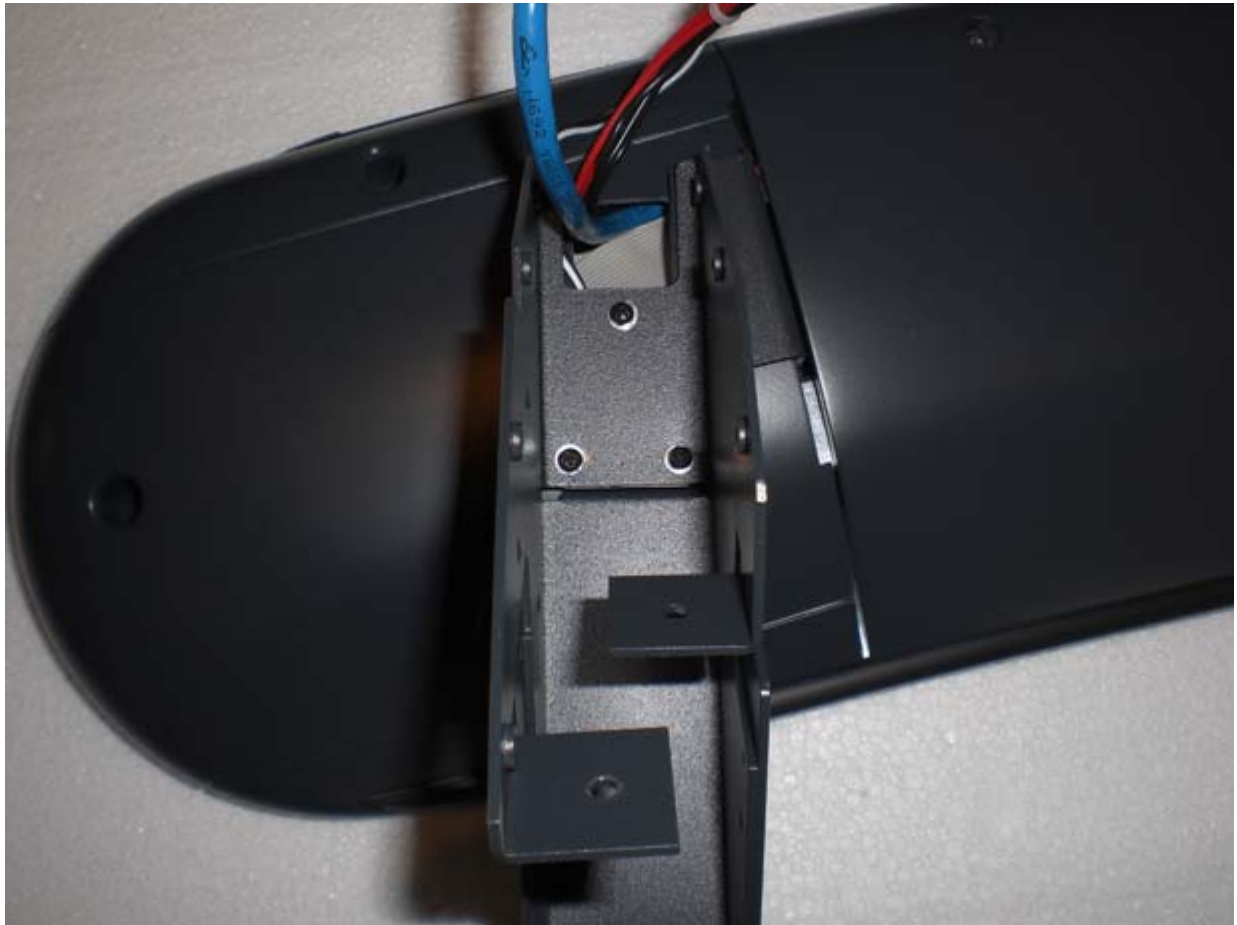


Dress the cables so that they will run through the gap in the support.





Attach each support using three M3 X 6mm screws, washers and star washers. Be careful to ensure that the cables are not pinched under the support.



When both support columns are securely fastened you can now proceed with fitting the **ARC** to **Ramses MSC**.



Fitting The ARC

Note: IMPORTANT This step requires 2 people to ensure the **ARC** and **Ramses MSC** are not damaged during positioning.

Grip each of the **ARC** supports (1 person each) and align the **ARC** with the console as shown in the image below. Take care not to scratch any of the painted surfaces and **DO NOT** lift the **ARC** by the plastic moldings as damage may occur.

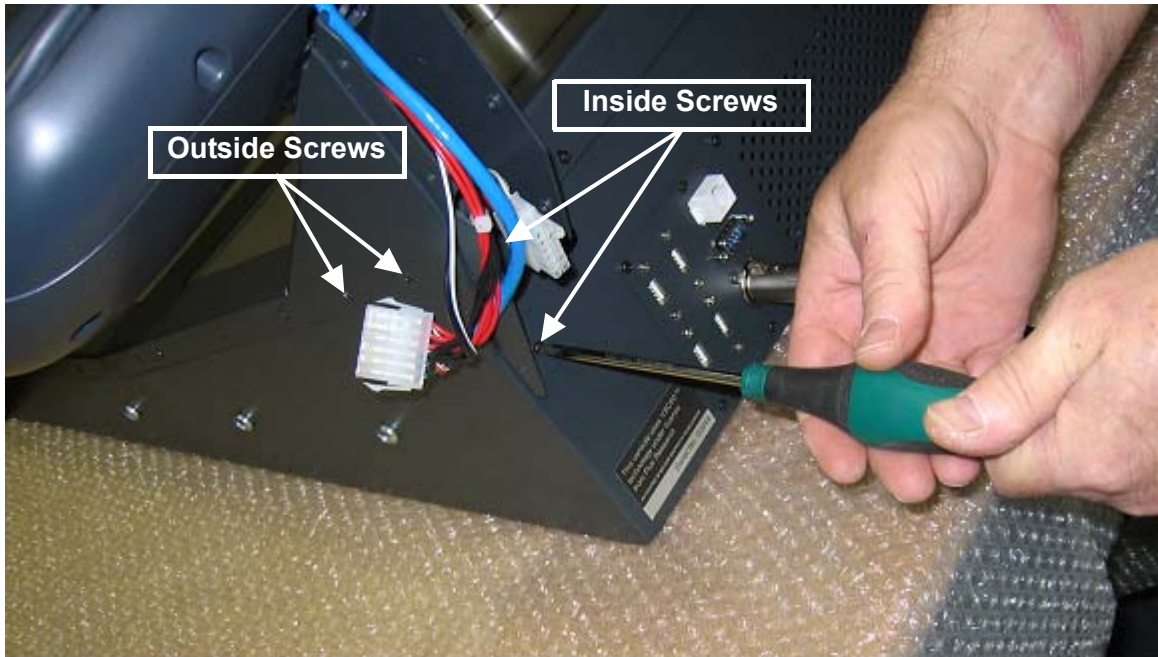


Once the **ARC** is aligned, carefully lower it into position and continue to support it while the fixing screws are inserted and tightened.

Attaching the ARC

Note: IMPORTANT Ensure a second person is supporting the ARC during the following steps.

Begin by loosely fitting 2 **M3 X 6** PAN head screws inside each the **ARC** support. Now add the 2 **MS** CSk head screws on the outside of each **ARC** support. The location of all these screws is shown in the image below.



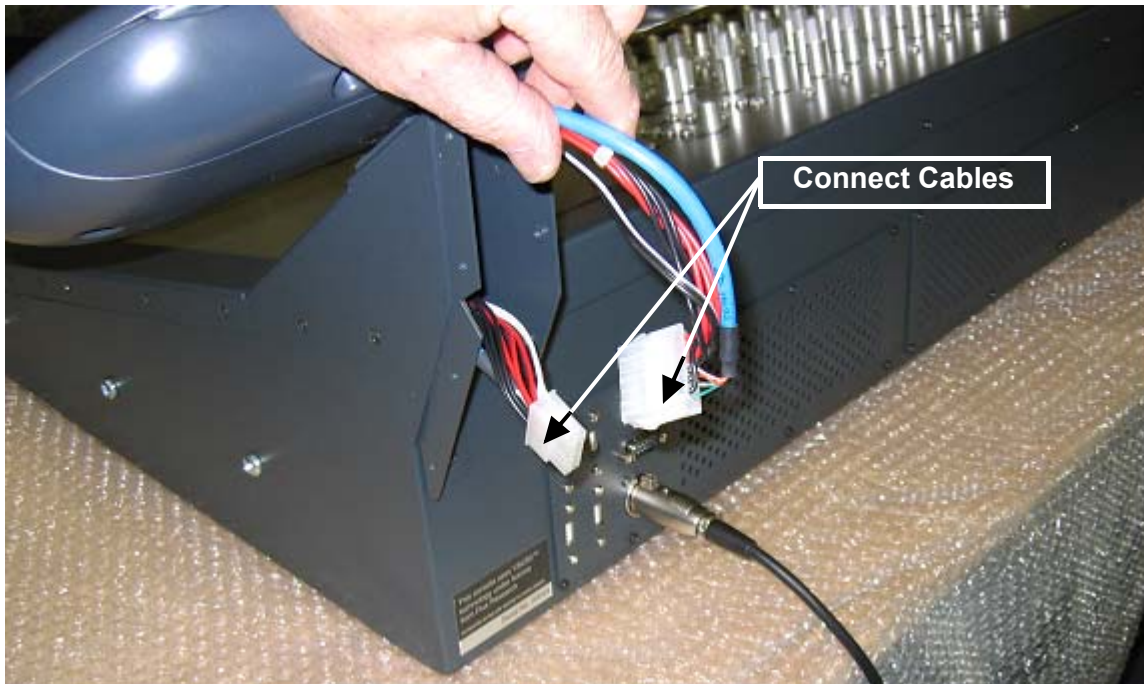
When all the screws are in place, tighten each of them. Repeat this step for both sides of the console.



Connect Cables

Locate the **ARC** cables housed within each side of the **Ramses MSC** and bring them through the **ARC** support.

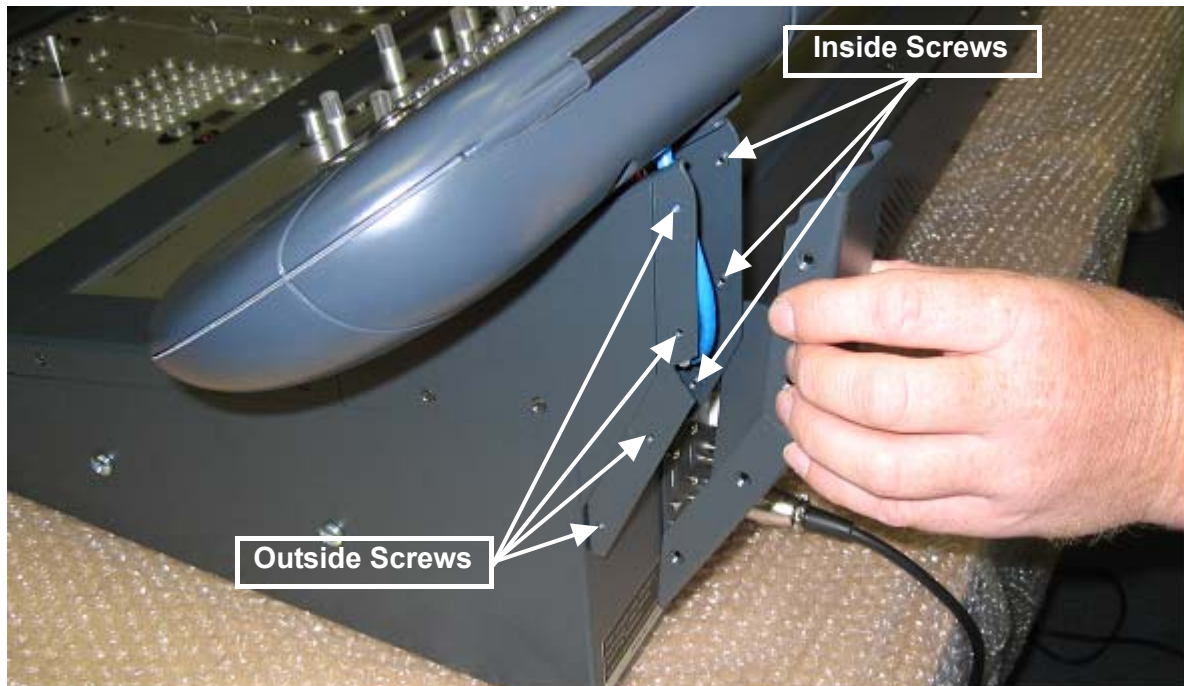
The connectors will only fit one way. Examine them and line them up accordingly. Carefully connect the cables (on both sides of the console) as shown in the image below. Ensure the locking tab on the connectors is secure before tucking the cables into the supports.





Fit the Rear ARC Support Covers

Carefully position each cover and align the screwholes. Loosely fit all **4 outside** and **3 inside** screws for each **ARC** support cover. These screws are all **M3 x 6** CSK head. The screw locations are identified in the image below.



When all the screws are inserted, tighten each of them.